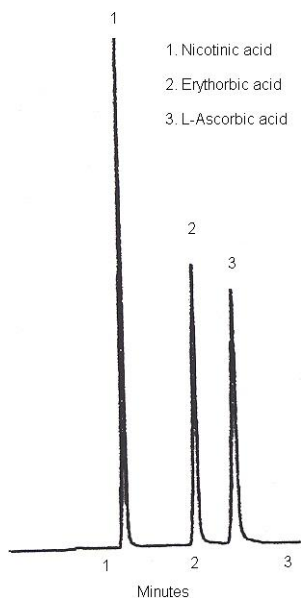


 INDUSTRIES	Epic HILIC-PI Sub-2 Micron Columns
	Application News 701 South Route 73 • West Berlin, New Jersey 08091-2621 • (856) 753-8400 • Fax (856) 753-8484

Epic HILIC-PI is useful for retention and separation of polar and non compounds. Reversed-phase HPLC is widely used for separation of many pharmaceutical compounds. However, retention and separation of many polar analytes has proven to be a challenge. Many of these types of compounds are unretained or poorly retained on most conventional reversed-phase stationary phases, such as ODS. Fortunately, to deal with these types of analytes an alternative mode of chromatography can be utilized using polar stationary phases and highly organic mobile phases. This mode of chromatography has been utilized for many years and is referred to as “ hydrophilic interaction chromatography” or HILIC. HILIC chromatography uses mobile phases containing between 5 - 20 % water for the retention of polar compounds.

Epic HILIC-PI is a new stationary phase for HILIC chromatography. It consists of an aromatic amine based stationary phase bound to silica. This composition provides for excellent retention and peak shape for polar amine compounds. Many of the commercially available HILIC stationary phases are converted normal phase columns. These normal phase columns yield poor methods, poor separations and lack durability. Epic HILIC-PI is specifically designed for HILIC chromatography and can achieve high performance separations, yield rugged methods and deliver long column life times. Epic HILIC-PI is an excellent choice for samples containing polar amines where superior retention and peak shape are essential.

To extend the performance of Epic HILIC-PI ES Industries is pleased to introduce Epic HILIC-PI 1.8 μ m columns for use with ultra high pressure liquid chromatographs. These columns have been engineered specifically for chromatography at pressures up to 19000 psi. The Epic 1.8 μ m columns will provide the chromatographer with the highest resolution over a wide variety of flow rate conditions and mobile phase compositions. The chromatogram shown below highlights some the capability for Epic HILIC-PI.



Column: Epic HILIC-PI 5- X 2.1mmID 1.8 μ m
Mobile Phase: 70% Acetonitrile / 30% 50mM Ammonium Hydrogen Phosphate
Flow Rate: 0.7mL/Min
Temperature: 30 $^{\circ}$ C
Detection: UV @ 254nm
Injection: 1 μ L/min

Epic HILIC-PI

<i>HILIC-HC</i>	<i>1.8 micron</i>	<i>3.0mm ID</i>	<i>2.1mm ID</i>	<i>1.0mm ID</i>
3cm		583A91-EHIC-PI	582A91-EHIC-PI	581A91-EHIC-PI
5cm		513A91-EHIC-PI	582A91-EHIC-PI	581A91-EHIC-PI
10cm		523A91-EHIC-PI	523A91-EHIC-PI	523A91-EHIC-PI

ES INDUSTRIES
701 South Route 73
West Berlin NJ 08091

Toll-Free: 1-800-356-6140
Phone: 856-753-8400
Fax: 856-753-8484

email: esindustries@msn.com
website: www.esind.com